

Dates 28/6 - 5/7

2025

MAJESTIC

FROM
€1230



PORT GHALIB - PORT GHALIB

ROCKY ISLAND

ZABARGAD ISLAND

ST. JOHNS

FURY SHOAL

ELPHINSTONE

DIVE, EAT, SLEEP AND REPEAT!



MAJESTIC

ABOUT YOUR ADVENTURE



THE YACHT

MAJESTIC IS A SPACIOUS YACHT LAUNCHED IN 2023. WITH HER GENEROUS DESIGN, SPREAD ACROSS 5 DECKS, SHE CAN HOST UP TO 34 GUESTS IN TWIN CABINS, SUITES AND GORGEOUS HONEYMOON SUITES. AND DID WE MENTIONED SHE CARRIES A JACUZZI ON HER TOP DECK.

WITH INDOOR AND OUTDOOR DINING OPTIONS AS WELL AS A COZY INDOOR SALOON, LARGE ENOUGH FOR EVERYONE TO RELAX IN, YOUR EXPERIENCE ONBOARD MAJESTIC WILL SURELY BE EXTRA ORDINARY.



INCLUDED

- TRANSFER TO AND FROM THE YACHT
- FULL ONBOARD ACCOMODATION INC. ALL MEALS
- 15-18 DIVES DURING 6 DAYS INCLUDING NIGHTDIVES
- DIVEGUIDE
- FREE NITROX

NOT INCLUDED

- FLIGHTS AND VISA TO AND FROM EGYPT
- ACCOMODATION BEFORE OR AFTER THE TRIP
- ALCOHOL
- DIVE EQUIPMENT
- INDIVIDUAL DIVE INSURANCE



HER HANDPICKED EXPERIENCED CREW WILL ALWAYS GO THAT EXTRA MILE TO ENSURE YOUR HAPPINESS.

THE FOOD PREPARED BY OUR THREE CHEFS IS DELICIOUS, HEALTHY AND STUNNINGLY PRESENTED.

COMBINED WITH DIVING IN THE COLORFUL AND WARM RED SEA, THESE CHARACTERISTICS OF MAJESTIC WILL MAKE FOR A TRIP UNLIKE ANY YOU'VE EXPERIENCED BEFORE.



MAJESTIC

DAILY SCHEDULE

DAY 1 - 28/6

ON ARRIVAL DAY, YOUR CABIN WILL BE READY AND WAITING FOR YOU FROM 13:00. TRANSFER TO THE YACHT CAN BE PREARRANGED, FREE OF CHARGE.

SNACKS 16:45 DINNER 19:00

DAY 2 - 29/6

THE FIRST MORNING ON THE MAJESTIC WILL BEGIN WITH A DELICIOUS BREAKFAST SERVED TO YOU BY OUR CHEF AND HIS TEAM.

FOLLOWING THIS, OUR CRUISE DIRECTOR WILL GIVE THE WELCOME BRIEFS AS WE START TO SAIL TO OUR CHECK DIVE LOCATION.

ONCE EVERYONE IS FEELING COMFORTABLE THE JOURNEY TO ROCKY ISLAND, ZABARGAD ISLAND, ST. JOHN, FURY SHOAL AND ELPHINSTONE BEGIN!

DAY 3 TO 6 - 30/6 TO 3/7

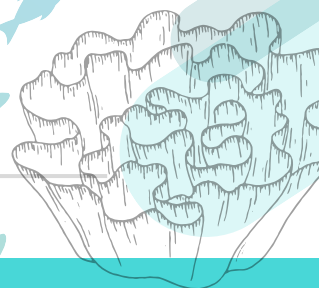
THE NEXT 4 DAYS WE WILL STICK TO A SIMILAR SCHEDULE. DIVING, EATING, SLEEPING AND REPEATING. SOUNDS EASY RIGHT? WE WILL PREPARE TO MAKE THREE DIVES PER DAY, EACH WITH AT LEAST A TWO HOUR SURFACE INTERVAL WHICH WILL INCLUDE NIGHT DIVES AT THE SITES WHERE THIS IS PERMITTED.

DAY 7 - 4/7

IT'S NOW THE END OF THE WEEK AND TIME TO HEAD BACK TO THE MARINA. BUT DON'T WORRY, WE WILL STILL DIVE THIS DAY. WE START WITH THE MORNING DIVE, FOLLOWED BY A SECOND DIVE AS WE MOVE CLOSER TO PORT GHALIB. ARRIVING AT THE MARINA IN THE AFTERNOON GIVE YOU THE OPPORTUNITY TO EXPLORE THE LOCAL AREA. SNACKS AND DINNER WE HAVE THE LAST EVENING ON BOARD.

DAY 8 - 5/7

TODAY ITS CHECK OUT DAY! IT'S TIME TO SAY GOODBYE TO ALL THE NEW FRIENDS YOU HAVE MADE DURING THE WEEK AND A FINAL THANK TO ALL CREW. CHECK OUT FROM THE CABINS IS AT 09:00 AND FROM THE BOAT AT 15:00. DON'T FORGET TO LET US KNOW IF YOU LIKE US TO PRE ARRANGE YOUR TRANSFER.



MAJESTIC



PRICE LIST

FLOOR 1

€1230 TWIN CABIN

€1230 SUITE

FLOOR 2

€1330 TWIN CABIN

€1330 SUITE

FLOOR 3

€1330 TWIN CABIN

€1430 HONEYMOON SUITE

FLOOR 4

€1330 TWIN CABIN

+ 60% SINGLE CABIN

TO CONFIRM YOUR TRIP A 30%
DEPOSIT IS REQUIRED.

MARINA FEES & FUEL

€200 PAID IN EUROS ONBOARD

THE RECOMMENDED
TIP FOR CREW IS 10%
OF THE TRIP PRICE



FLOOR 1
TWIN CABIN



FLOOR 3
HONEYMOON
SUITE

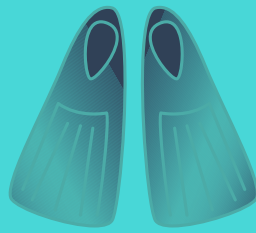


FLOOR 1
SUITE



FLOOR 4
TWIN CABIN

EXTRA SERVICES ONBOARD

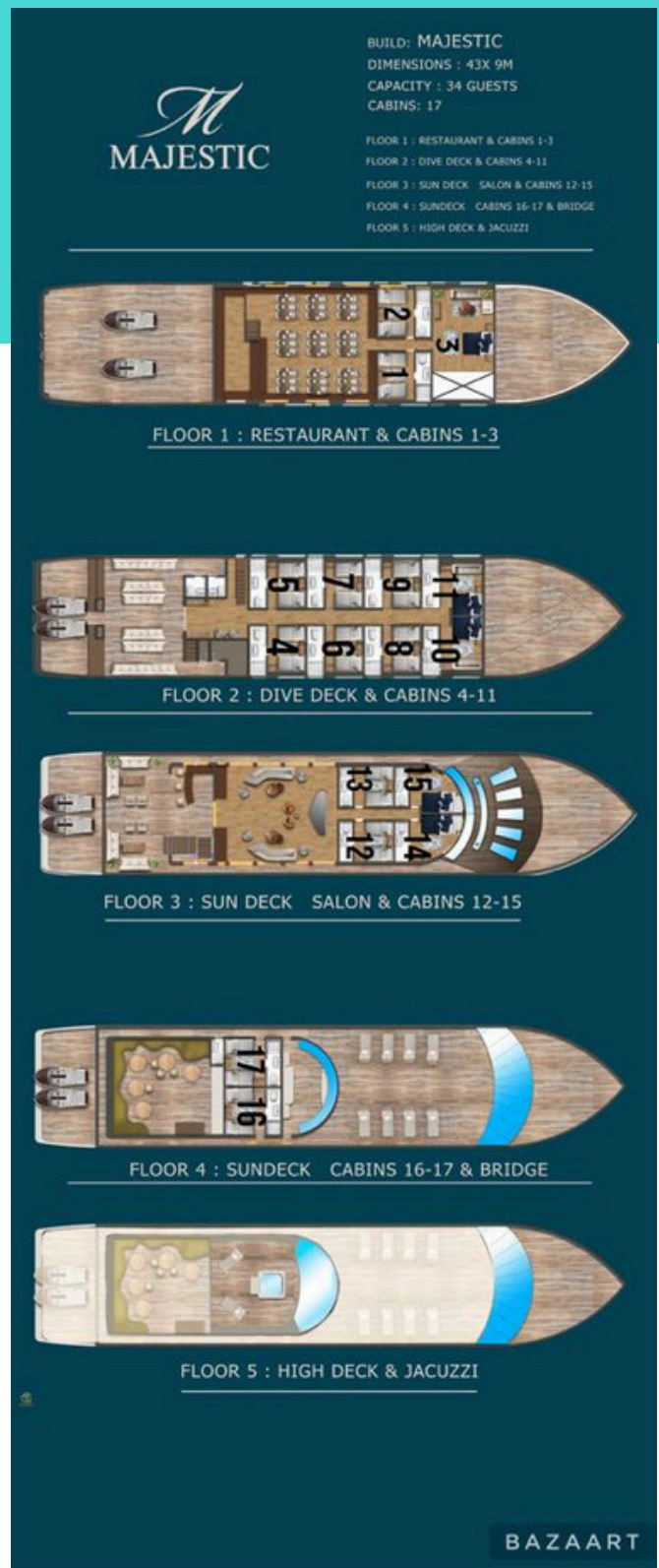


RENTAL OF DIVING EQUIPMENT

- FULL DIVE EQUIPMENT €135
- DIVE COMPUTER €35€/WEEK
- DIVE TORCH €5/DAY
- DIVING COURSES UPON REQUEST
- 15 L CYLINDER €30/WEEK
- STAGE OR SIDEMOUNT CYLINDER €30/WEEK

ALCOHOL AND BEVERAGE

- BEER €4
- GLASS OF WINE €5
- BOTTLE OF WINE €15
- BOTTLE OF SPARKLING WINE €25



Yacht specification

Name: MY Majestic

Length: 43 meter

Width: 9,5 meter

Cabins: 12

Suites: 5

Each cabin is equipped with: Toilet and shower, air-conditioning and minibar

Engin : 2 x 1000 HP - Mercedes

Generator : 2 x250 KW-MAN & 1 Generator x 100 KW - MAN

Compressor : 3 x 250 Power

Compressor : 1 x 900 Nitrox power

Fresh Water : 25 tons 2 sea water desalination plants 15 tons x 24 hours

Fuel :- 25 tons

Diving tanks :- 30 tank-12

2 x Life Raft and life jackets

Fire Extinguishers and fire alarms

Equipment with VHR, GPS, radar, EPIRB, start and AIS

